

BAB 2

KONFIGURASI DASAR SWITCH

Telkom University
School of Industrial Engineering
System Information Program
2016

BAB 2

2.0 Pendahuluan

2.1 Dasar Konfigurasi Switch

2.2 Switch Security: Manajemen dan Implementasi

BAB 2: TUJUAN

Setelah mempelajari bab ini, mahasiswa diharapkan dapat:

- Explain the advantages and disadvantages of static routing.
- Configure initial settings on a Cisco switch.
- Configure switch ports to meet network requirements.
- Configure the management switch virtual interface.
- Describe basic security attacks in a switched environment.
- Describe security best practices in a switched environment.
- Configure the port security feature to restrict network access.

URUTAN BOOTING SWITCH

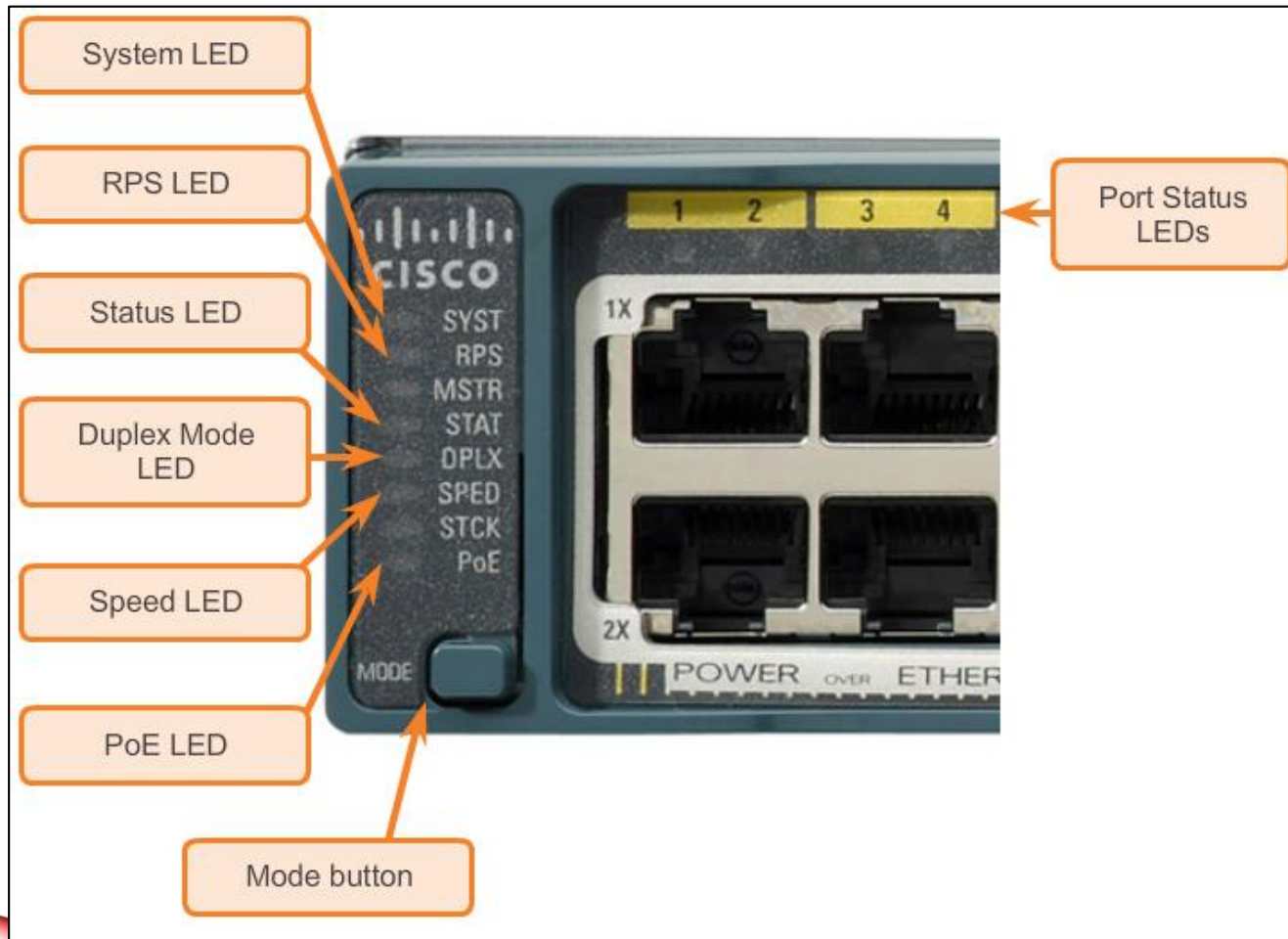
1. Power-on self test (POST).
2. Run boot loader software.
3. Boot loader performs low-level CPU initialization.
4. Boot loader initializes the flash file system
5. Boot loader locates and loads a default IOS operating system software image into memory and passes control of the switch over to the IOS.

SWITCH LED INDIKATOR

- Setiap port di Cisco Catalyst switch memiliki status indikator LED.
- Defaultnya, lampu LED menandakan aktivitas port, tetapi lampu LED juga dapat memberikan informasi lain tentang switch melalui tombol Mode.
- Berikut mode yang tersedia pada switch cisco catalys 2960:
 - LED sistem
 - Redundant Power System (RPS) LED
 - Port Status LED
 - Port Duplex LED
 - Port Speed LED
 - Power over Ethernet (PoE) Mode LED

BASIC SWITCH CONFIGURATION

CISCO CATALYST 2960 SWITCH MODES



LANGKAH2 PERSIAPAN UNTUK MANAJEMEN DASAR SWITCH

- Untuk manajemen jarak jauh, dapat menggunakan jaringan untuk mengkonfigurasinya
- IP address dan subnet mask harus di konfigurasi.
- Jika mengkonfigur switch dari jarak jauh, maka default gateway juga harus di konfigurasi.
- Informasi IP mencakup (address, subnet mask, gateway) harus di masukan ke dalam switch switch virtual interface (SVI).
- Meskipun pengaturan IP memungkinkan manajemen jarak jauh sebuah switch, tapi itu tetap tidak mengijinkan beralih ke layer network/ layer3.

LANGKAH2 PERSIAPAN UNTUK MANAJEMEN DASAR SWITCH (CONT.)

Cisco Switch IOS Commands

Enter global configuration mode.	S1# configure terminal
Enter interface configuration mode for the SVI.	S1(config)# interface vlan99
Configure the management interface IP address.	S1(config-if)# ip address 172.17.99.11
Enable the management interface.	S1(config-if)# no shutdown
Return to the privileged EXEC mode.	S1(config-if)# end
Save the running config to the startup config.	S1# copy running-config startup-config

BASIC SWITCH CONFIGURATION

LANGKAH2 PERSIAPAN UNTUK MANAJEMEN DASAR SWITCH (CONT.)

Cisco Switch IOS Commands

Enter global configuration mode.

S1# **configure terminal**

Configure the default gateway for the switch.

S1(config)# **ip default-gateway
172.17.99.**

Return to the privileged EXEC mode.

S1(config-if)# **end**

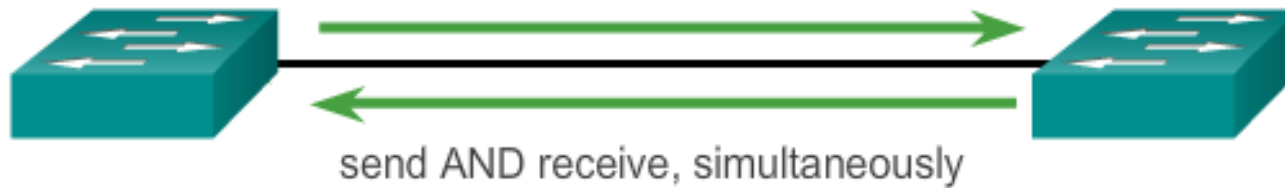
Save the running config to the startup config.

S1# **copy running-config startup-
config**

CONFIGURING SWITCH PORTS

JENIS KOMUNIKASI

Full-Duplex Communication

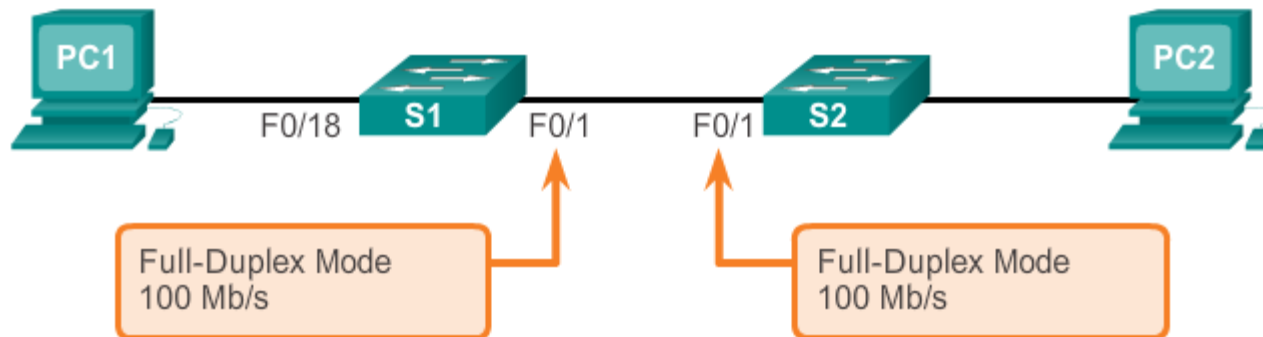


Half-Duplex Communication



KONFIGURASI PORT SWITCH DI LAYER FISIK

Configure Duplex and Speed



Cisco Switch IOS Commands

Enter global configuration mode.	S1# configure terminal
Enter interface configuration mode.	S1 (config) # interface FastEthernet 0/1
Configure the interface duplex.	S1 (config-if) # duplex full
Configure the interface speed.	S1 (config-if) # speed 100
Return to the privileged EXEC mode.	S1 (config-if) # end
Save the running config to the startup config.	S1# copy running-config startup-config

CONFIGURING SWITCH PORTS

AUTO-MDIX FASILITAS

- Jenis kabel tertentu (straight-through or crossover) secara historis diperlukan untuk menghubungkan perangkat.
- The automatic medium-dependent interface crossover (auto-MDIX) memfasilitasi untuk mengeliminasi masalah tersebut.
- ketika auto-MDIX disetting aktif, interface otomatis mendeteksi dan akan mengkonfigurasi dengan tepat sesuai jenis kabel nya.
- Ketika mengaktifkan auto-MDIX pada interface, kecepatan interface dan duplex harus di setting **auto**.

AUTO-MDIX FASILITAS (CONT.)

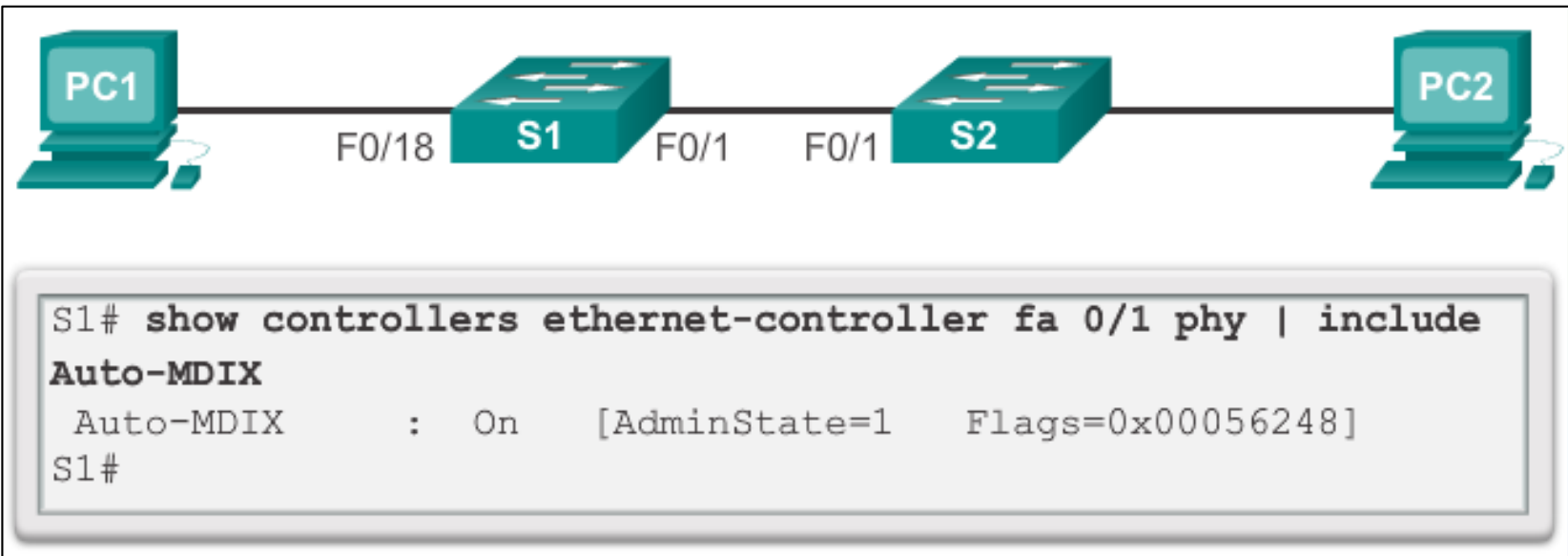
Configure auto-MDIX



Cisco Switch IOS Commands

Enter global configuration mode.	S1# configure terminal
Enter interface configuration mode.	S1 (config)# interface fastethernet 0/1
Configure the interface to autonegotiate duplex with the connected device.	S1 (config-if)# duplex auto
Configure the interface to autonegotiate speed with the connected device.	S1 (config-if)# speed auto
Enable auto-MDIX on the interface.	S1 (config-if)# mdix auto
Return to the privileged EXEC mode.	S1 (config-if)# end
Save the running config to the startup config.	S1# copy running-config startup-config

AUTO-MDIX FASILITAS (CONT.)



MEMVERIFIKASI KONFIGURASI PORT SWITCH

Verification Commands

Cisco Switch IOS Commands	
Display interface status and configuration.	S1# show interfaces [<i>interface-id</i>]
Display current startup configuration.	S1# show startup-config
Display current operating config.	S1# show running-config
Display information about flash file system.	S1# show flash
Display system hardware and software status.	S1# show version
Display history of commands entered.	S1# show history
Display IP information about an interface.	S1# show ip [<i>interface-id</i>]
Display the MAC address table.	S1# show mac-address-table OR S1# show mac address-table

LAYER NETWORK ACCESS

Display interface status and statistics.

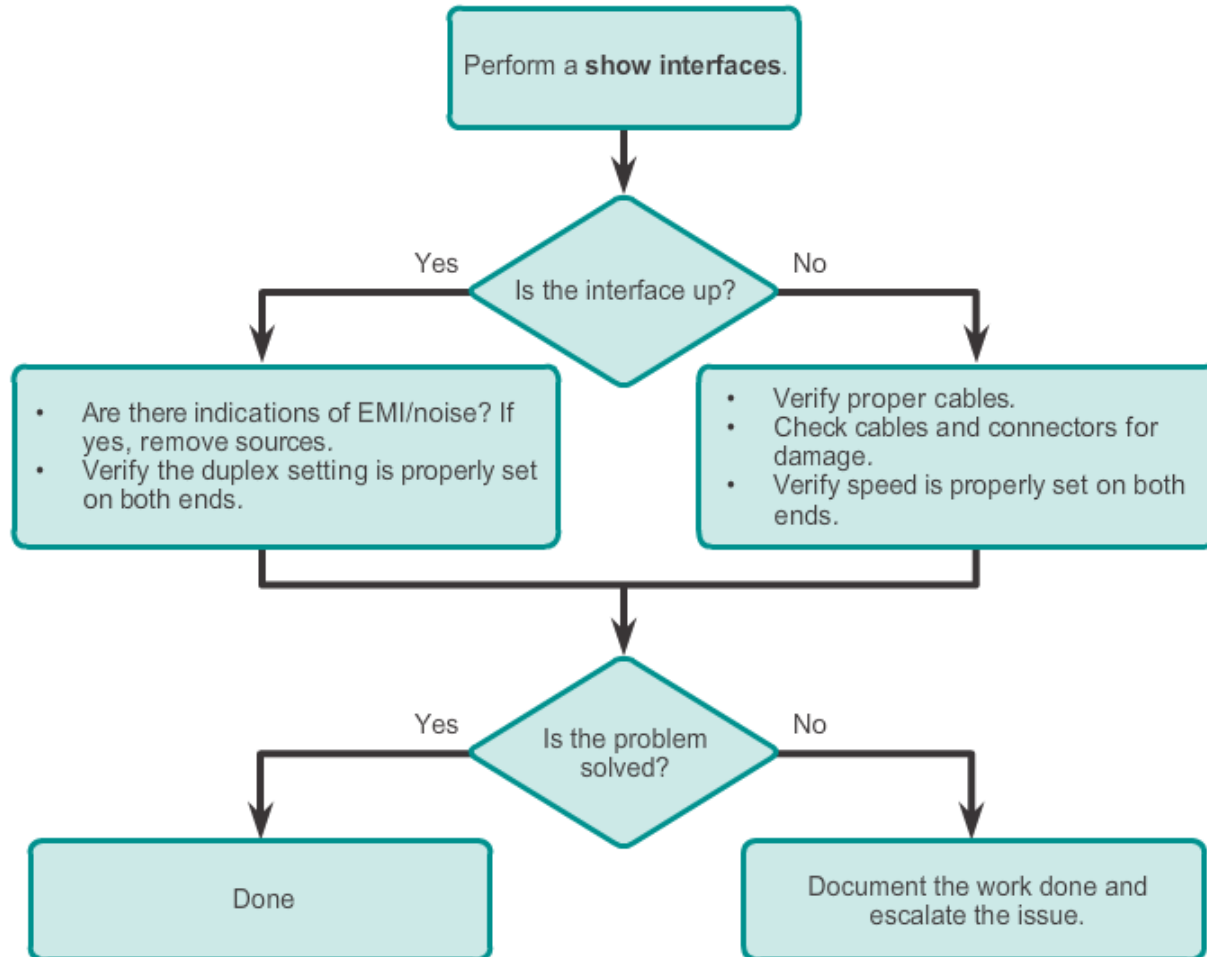
```
S1# show interface FastEthernet0/1
FastEthernet0/1 is up, line protocol is upHardware is Fast
Ethernet, address is 0022.91c4.0e01 (bia 0022.91c4.0e01)MTU
1500 bytes, BW 100000 Kbit, DLY 100 usec,
<...output omitted...>
 2295197 packets input, 305539992 bytes, 0 no buffer
Received 1925500 broadcasts, 0 runts, 0 giants, 0
throttles
3 input errors, 3 CRC, 0 frame, 0 overrun, 0 ignored
0 watchdog, 68 multicast, 0 pause input
0 input packets with dribble condition detected
3594664 packets output, 436549843 bytes, 0 underruns
8 output errors,1790 collisions,10 interface resets
0 unknown protocol drops
0 babbles, 235 late collision, 0 deferred
<output omitted>
```


CONFIGURING SWITCH PORTS LAYER NETWORK ACCESS (CONT.)

Parameter	Description
Runts	Packets that are discarded because they are smaller than the minimum packet size for the medium. For instance, any Ethernet packet that is less than 64 bytes is considered a runt.
Giants	Packets that are discarded because they exceed the maximum packet size for the medium. For example, any Ethernet packet that is greater than 1518 bytes is considered a giant.
Input errors	Total number of errors. It includes runts, giants, no buffer, CRC, frame, overrun, and ignored counts.
CRC	CRC errors are generated when the calculated checksum is not the same as the checksum received.
Output errors	Sum of all errors that prevented the final transmission of datagrams out of the interface that is being examined.
Collisions	Number of messages retransmitted because of an Ethernet collision.
Late collisions	Jammed signal could not reach to ends.

TROUBLESHOOTING SWITCH MEDIA (CONNECTION) ISSUES

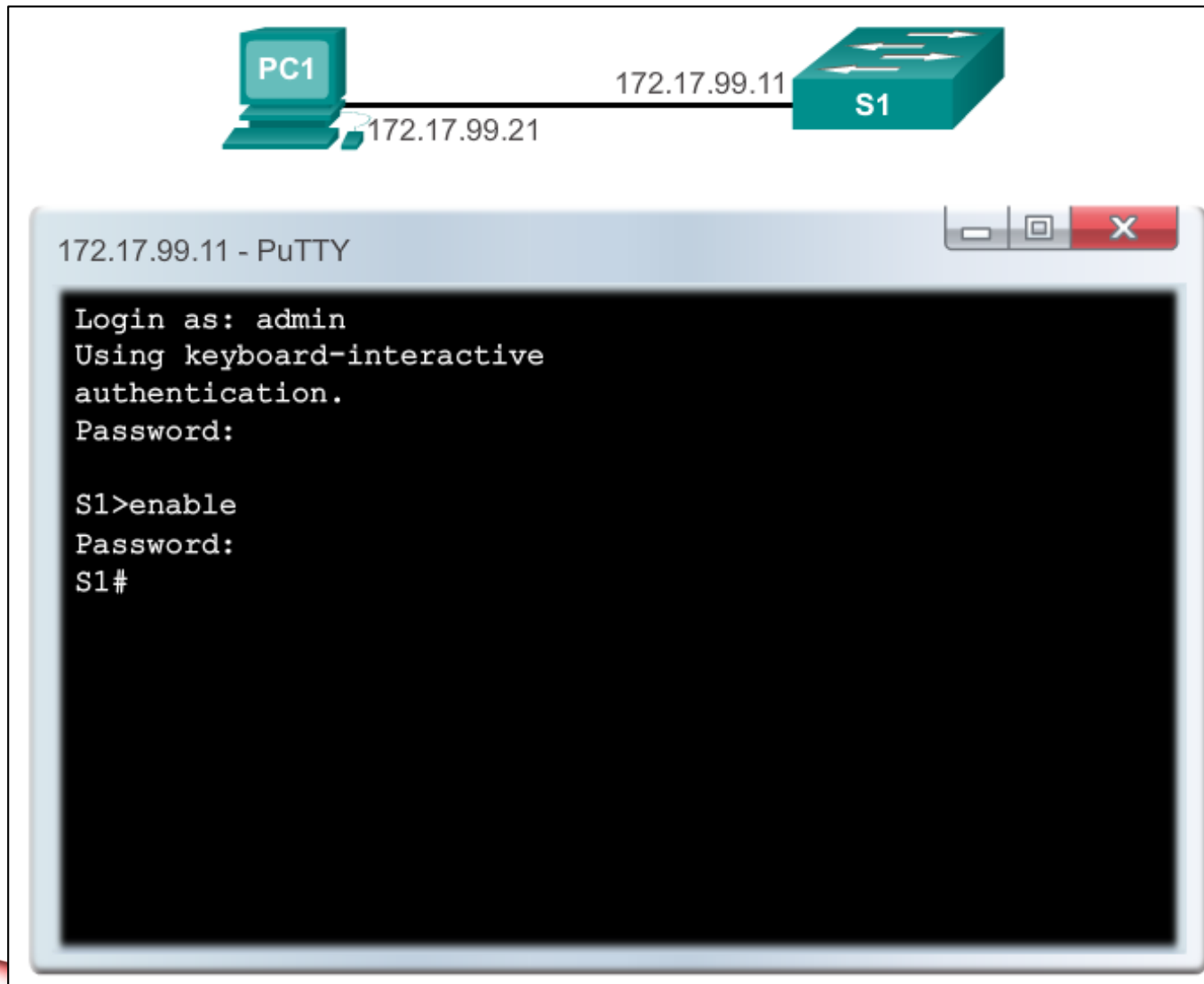
Troubleshooting Switch Media Issues



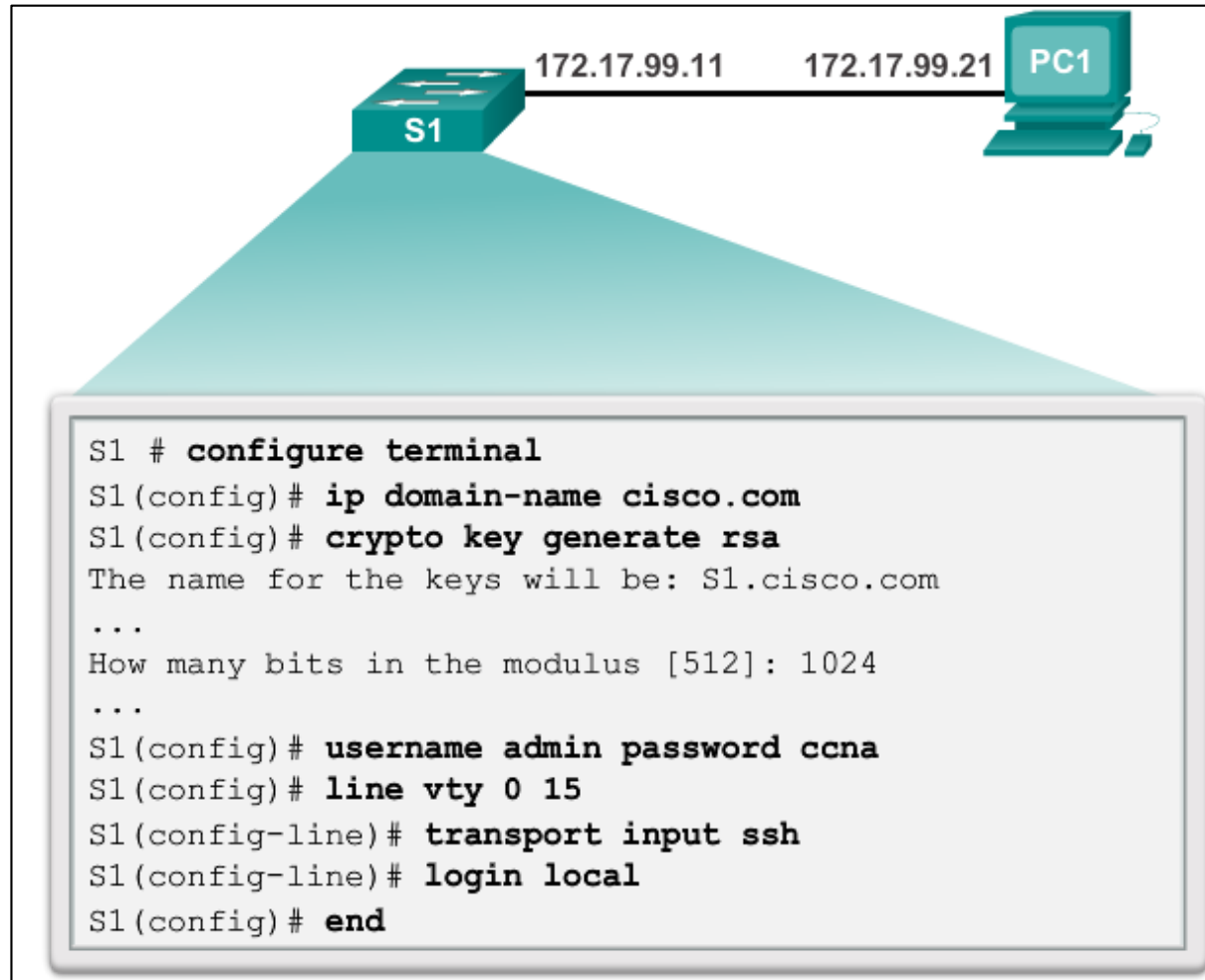
SSH OPERATION

- Secure Shell (SSH) is a protocol that provides a secure (encrypted), command-line based connection to a remote device.
- SSH is commonly used in UNIX-based systems.
- The Cisco IOS software also supports SSH.
- A version of the IOS software, including cryptographic (encrypted) features and capabilities, is required to enable SSH on Catalyst 2960 switches.
- Because its strong encryption features, SSH should replace Telnet for management connections.
- SSH uses TCP port 22, by default. Telnet uses TCP port 23.

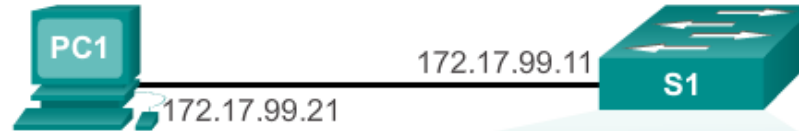
SSH OPERATION (CONT.)



CONFIGURING SSH



VERIFYING SSH



```
S1# show ip ssh
SSH Enabled - version 2.0
Authentication timeout: 90 secs; Authentication retries: 2
Minimum expected Diffie Hellman key size : 1024 bits
IOS Keys in SECSH format(ssh-rsa, base64 encoded):
ssh-rsa
AAAAB3NzaC1yc2EAAAADAQABAAQgQCdLksVz2QlREsoZt2f2scJHbW3aMMDM8
/8jg/srGFNL
i+f+qJWwxt26BWmy694+6ZIQ/j7wUfIVNlQhI8GUOVIuKNqVMOMtLg8Ud4qAiLbGJfAa
P3fyrKmViPpO
eOZof6tnKgKKvJz18Mz22XAf2u/7Jq2JnEFXycGMO880UJQL3Q==

S1# show ssh
Connection Version Mode Encryption Hmac State Username
0 2.0 IN aes256-cbc hmac-sh1 Session started ricky
0 2.0 OUT aes256-cbc hmac-sh1 Session started ricky
%No SSHv1 server connections running.
S1#
```

MAC ADDRESS FLOODING

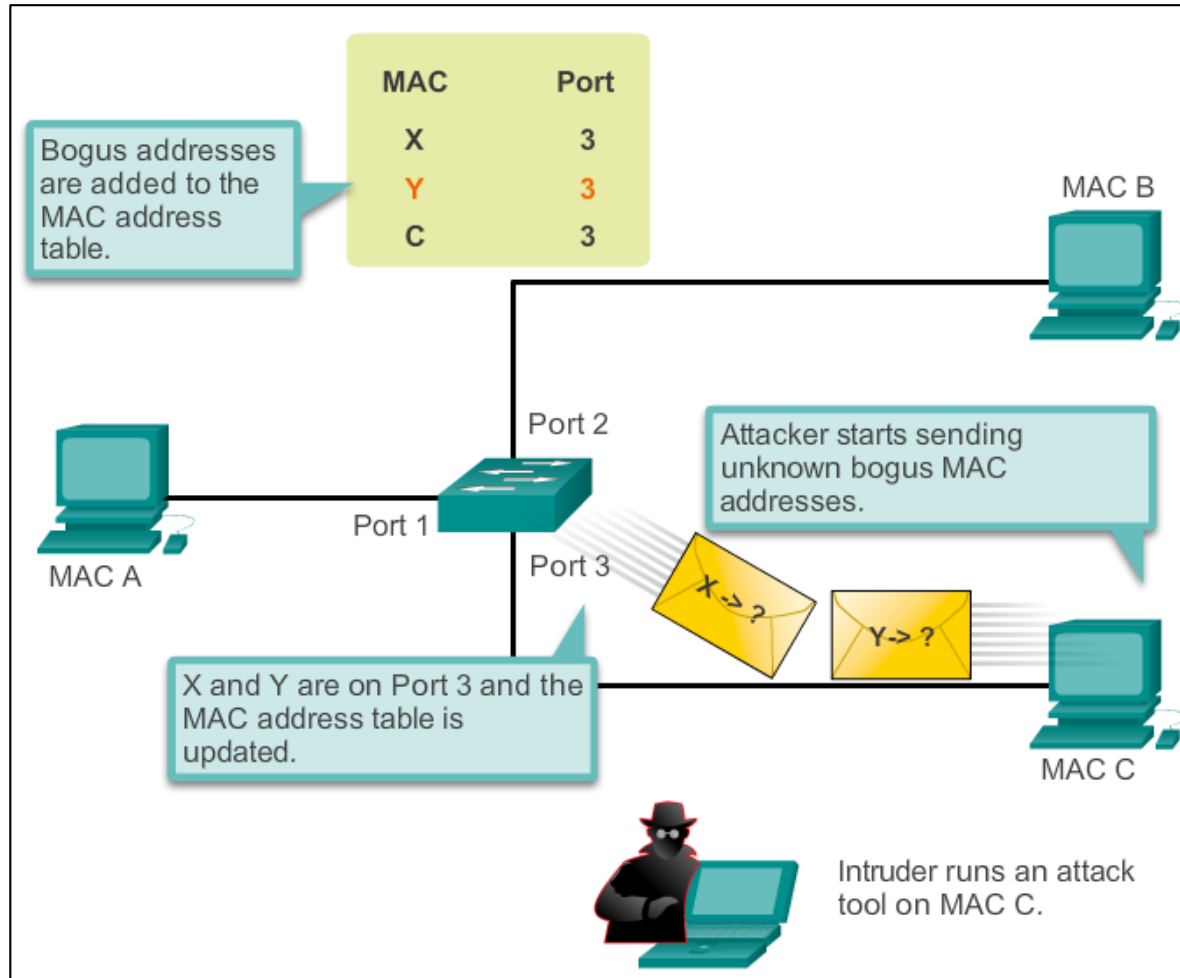
- Switches automatically populate their CAM tables by watching traffic entering their ports.
- Switches forward traffic through all ports if it cannot find the destination MAC in its CAM table.
- Under such circumstances, the switch acts as a hub. Unicast traffic can be seen by all devices connected to the switch.
- An attacker could exploit this behavior to gain access to traffic normally controlled by the switch by using a PC to run a MAC flooding tool.
- Such tool is a program created to generate and send out frames with bogus source MAC addresses to the switch port.
- As these frames reach the switch, it adds the bogus MAC address to its CAM table, taking note of the port the frames arrived.

MAC ADDRESS FLOODING (CONT.)

- Eventually the CAM table fills out with bogus MAC addresses.
- The CAM table now has no room for legit devices present in the network and, therefore, never finds their MAC addresses in the CAM table.
- All frames are now forwarded to all ports, allowing the attacker to access traffic to other hosts.

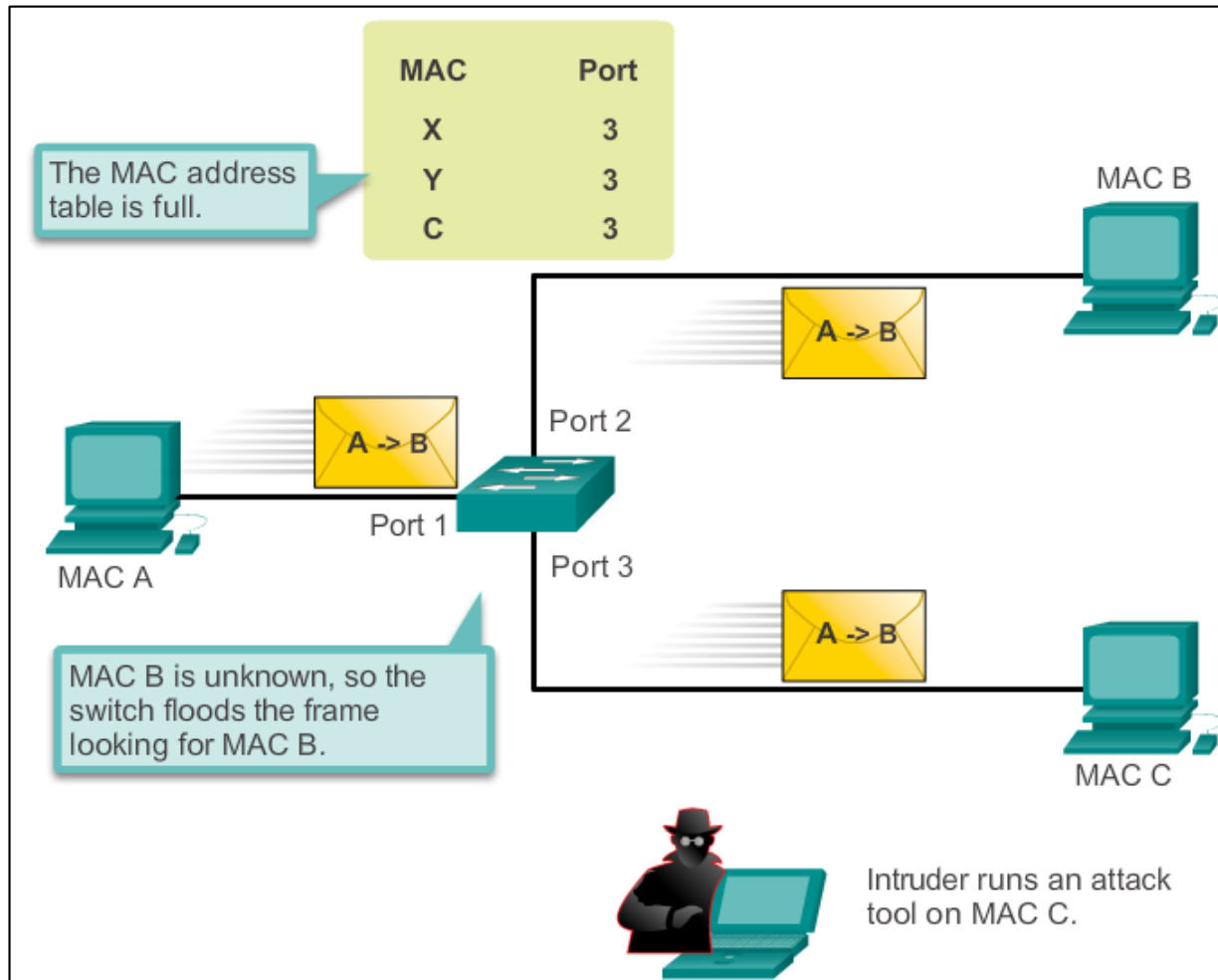
MAC ADDRESS FLOODING (CONT.)

An attacker flooding the CAM table with bogus entries.



MAC ADDRESS FLOODING (CONT.)

The switch now behaves as a hub.

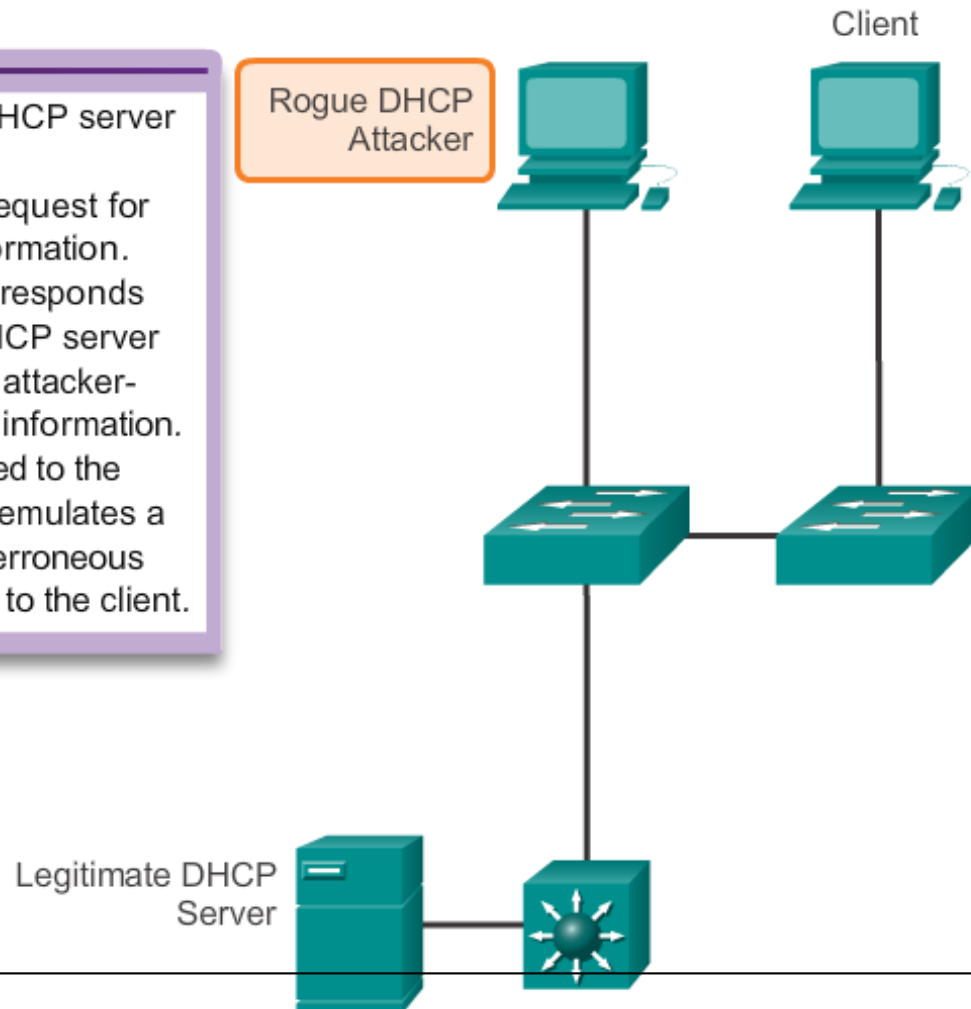


DHCP SPOOFING

- DHCP is a network protocol used to automatically assign IP information.
- Two types of DHCP attacks are:
 - DHCP spoofing
 - DHCP starvation
- In DHCP spoofing attacks, a fake DHCP server is placed in the network to issue DHCP addresses to clients.
- DHCP starvation is often used before a DHCP spoofing attack to deny service to the legitimate DHCP server.

DHCP SPOOF ATTACK

- 1) An attacker activates a DHCP server on a network segment.
- 2) The client broadcasts a request for DHCP configuration information.
- 3) The rogue DHCP server responds before the legitimate DHCP server can respond, assigning attacker-defined IP configuration information.
- 4) Host packets are redirected to the attacker's address as it emulates a default gateway for the erroneous DHCP address provided to the client.



LEVERAGING CISCO DISCOVERY PROTOCOL

- The Cisco Discovery Protocol is a Layer 2 Cisco proprietary protocol used to discover other directly connected Cisco devices.
- The Cisco Discovery Protocol is designed to allow the devices to auto-configure their connections.
- If an attacker is listening to Cisco Discovery Protocol messages, it could learn important information about the device model and running software version.

Note: Cisco recommends disabling CDP when not in use.

LEVERAGING TELNET

- The Telnet protocol is insecure and should be replaced by SSH.
- An attacker can use Telnet as part of other attacks:
 - Brute force password attack
 - Telnet DOS attack
- When passwords cannot be captured, attackers will try as many combinations of characters as possible. This attempt to guess the password is known as brute force password attack.
- Telnet can be used to test the guessed password against the system.

LEVERAGING TELNET (CONT.)

- In a Telnet DoS attack, the attacker exploits a flaw in the Telnet server software running on the switch that renders the Telnet service unavailable.
- This sort of attack prevents an administrator from remotely accessing switch management functions.
- This can be combined with other direct attacks on the network as part of a coordinated attempt to prevent the network administrator from accessing core devices during the breach.
- Vulnerabilities in the Telnet service that permit DoS attacks to occur are usually addressed in security patches that are included in newer Cisco IOS revisions.

10 BEST PRACTICES

- Develop a written security policy for the organization.
- Shut down unused services and ports.
- Use strong passwords and change them often.
- Control physical access to devices.
- Use HTTPS instead of HTTP.
- Perform backup operations on a regular basis.
- Educate employees about social engineering attacks.
- Encrypt and password-protect sensitive data.
- Implement firewalls.
- Keep software up-to-date.

NETWORK SECURITY TOOLS: OPTIONS

- Network security tools are important to network administrators.
- Network security tools allow an administrator to test the strength of the security measures implemented.
- An administrator can launch an attack against the network and analyze the results. This is also to determine how to adjust security policies to mitigate those types of attacks.
- Security auditing and penetration testing are two basic functions that network security tools perform.

NETWORK SECURITY TOOLS: AUDITS

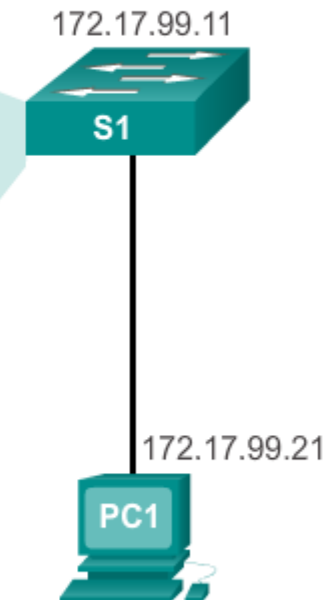
- Network security tools can be used to audit the network.
- By monitoring the network, an administrator can assess what type of information an attacker would be able to gather. For example, by attacking and flooding the CAM table of a switch, an administrator learn which switch ports are vulnerable to MAC flooding and can correct the issue.
- Network security tools can also be used as penetration test tools. Penetration testing is a simulated attack and helps to determine how vulnerable the network is when under a real attack.
- Weaknesses within the configuration of networking devices can be identified based on penetration test results.
- Changes can be made to make the devices more resilient to attacks.
- Such tests can damage the network and should be carried out under very controlled conditions.
- An offline test bed network that mimics the actual production network is ideal.

SECURE UNUSED PORTS

Disabling unused ports is a simple, yet efficient security guideline.

Disable unused ports using the **shutdown** command.

```
S1# show run
Building configuration...
...
version 15.0
hostname S1
...
interface FastEthernet0/4
 shutdown
!
interface FastEthernet0/5
 shutdown
!
interface FastEthernet0/6
 description web server
!
interface FastEthernet0/7
 shutdown
!
...
```

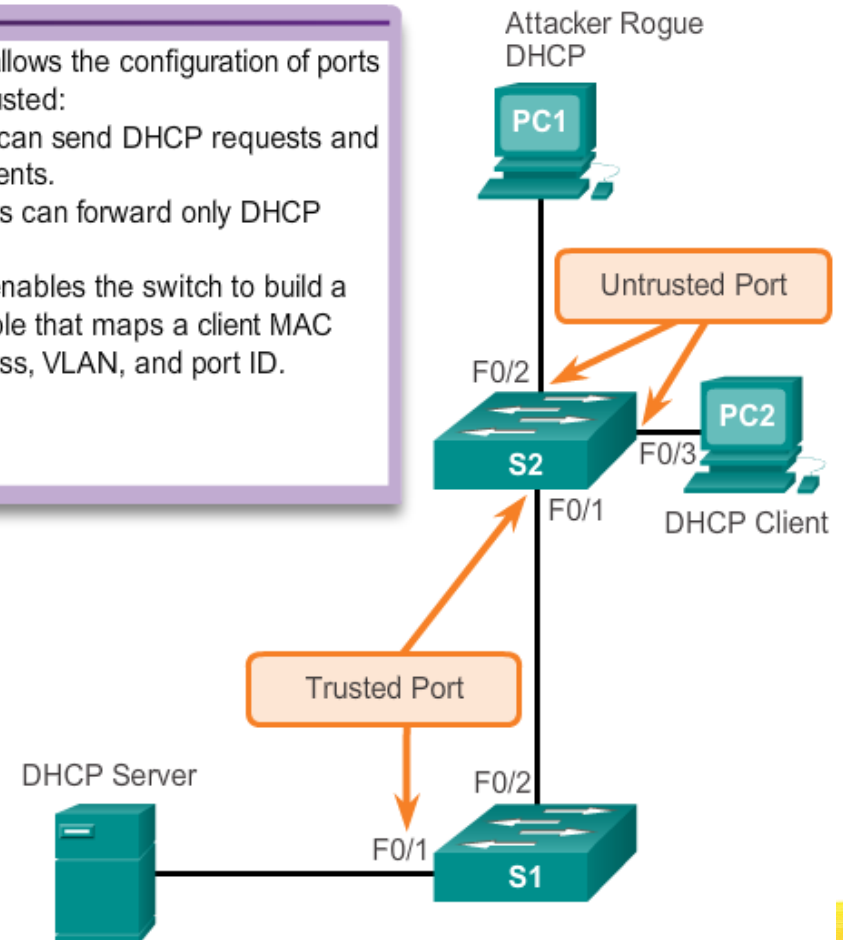


DHCP SNOOPING

DHCP Snooping specifies which switch ports can respond to DHCP requests

- DHCP snooping allows the configuration of ports as trusted or untrusted:
 - Trusted ports can send DHCP requests and acknowledgments.
 - Untrusted ports can forward only DHCP requests.
- DHCP snooping enables the switch to build a DHCP binding table that maps a client MAC address, IP address, VLAN, and port ID.

```
S1(config)# ip dhcp snooping
S1(config)# ip dhcp snooping vlan 10,20
S1(config)# interface fastethernet 0/1
S1(config-if)# ip dhcp snooping trust
S1(config)# interface fastethernet 0/2
S1(config-if)# ip dhcp limit rate 5
```



PORT SECURITY: OPERATION

- Port security limits the number of valid MAC addresses allowed on a port.
- The MAC addresses of legitimate devices are allowed access, while other MAC addresses are denied.
- Any additional attempts to connect by unknown MAC addresses generate a security violation.
- Secure MAC addresses can be configured in a number of ways:
 - Static secure MAC addresses
 - Dynamic secure MAC addresses
 - Sticky secure MAC addresses

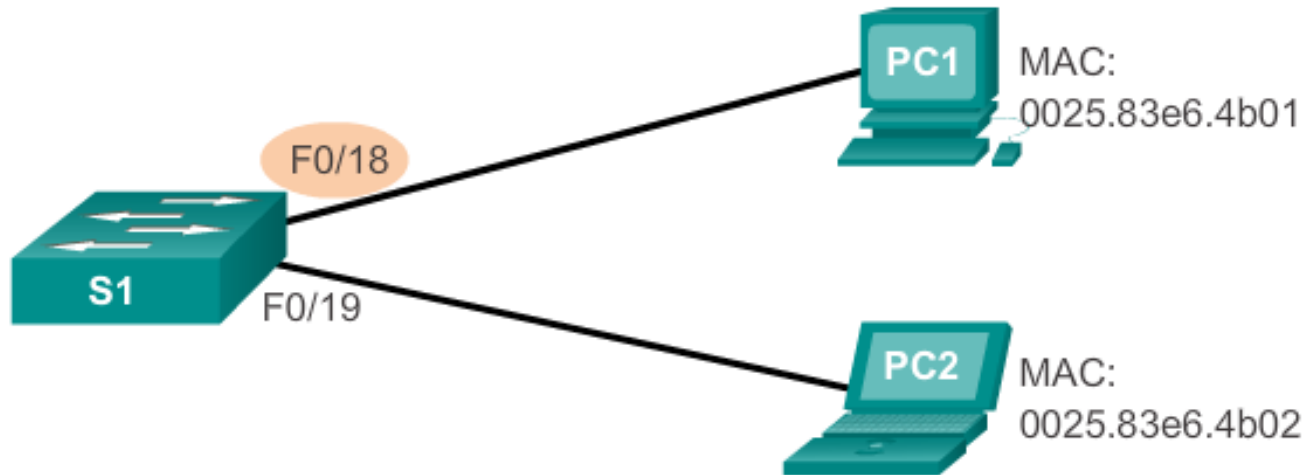
PORT SECURITY: VIOLATION MODES

- IOS considers a security violation when either of these situations occurs:
 - The maximum number of secure MAC addresses for that interface have been added to the CAM, and a station whose MAC address is not in the address table attempts to access the interface.
 - An address learned or configured on one secure interface is seen on another secure interface in the same VLAN.
- There are three possible actions to take when a violation is detected:
 - Protect
 - Restrict
 - Shutdown

DYNAMIC PORT SECURITY DEFAULTS

Feature	Default Setting
Port security	Disabled on a port.
Maximum number of secure MAC addresses	1
Violation mode	Shutdown. The port shuts down when the maximum number of secure MAC addresses is exceeded, and an SNMP trap notification is sent.
Sticky address learning	Disabled.

CONFIGURING DYNAMIC PORT SECURITY



Cisco IOS CLI Commands

```
S1(config)#interface  
fastethernet 0/18
```

Specify the interface to be configured for port security.

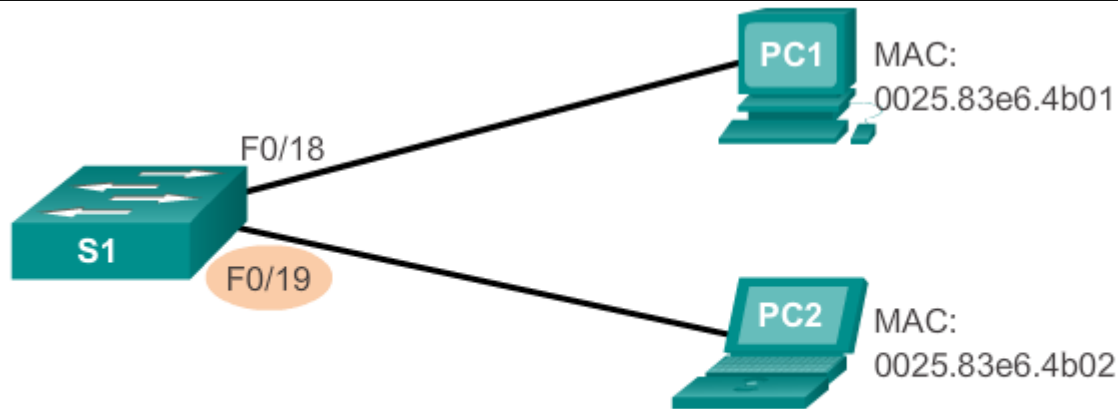
```
S1(config-if)#switchport mode  
access
```

Set the interface mode to access.

```
S1(config-if)#switchport port-  
security
```

Enable port security on the interface.

CONFIGURING PORT SECURITY STICKY



Cisco IOS CLI Commands

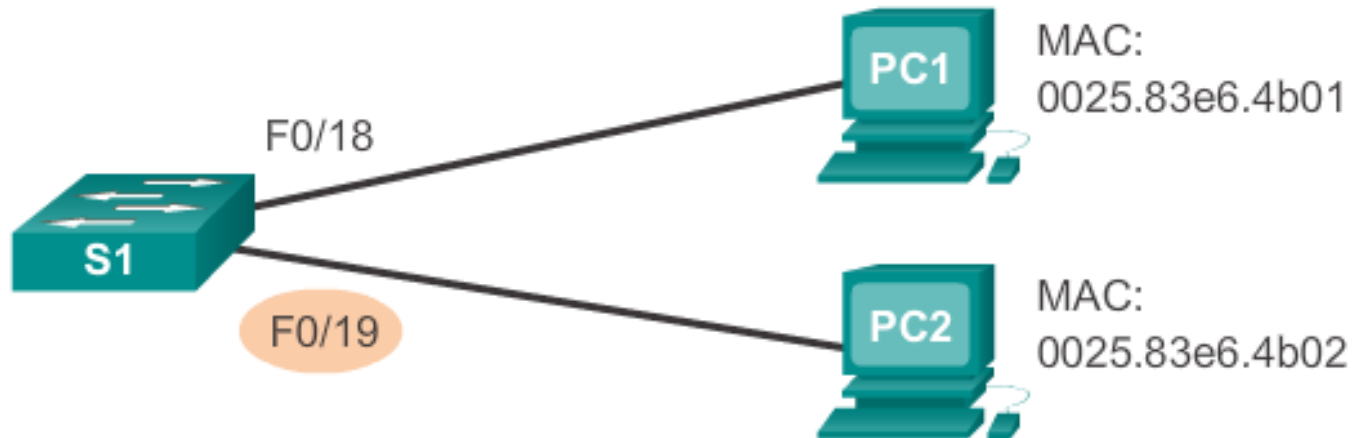
<code>S1 (config) #interface fastethernet 0/18</code>	Specify the interface to be configured for port security.
<code>S1 (config-if) #switchport mode access</code>	Set the interface mode to access.
<code>S1 (config-if) #switchport port-security</code>	Enable port security on the interface.
<code>S1 (config-if) #switchport port-security maximum 50</code>	Set the maximum number of secure addresses allowed on the port.
<code>S1 (config-if) #switchport port-security mac-address sticky</code>	Enable sticky learning.

VERIFYING PORT SECURITY STICKY



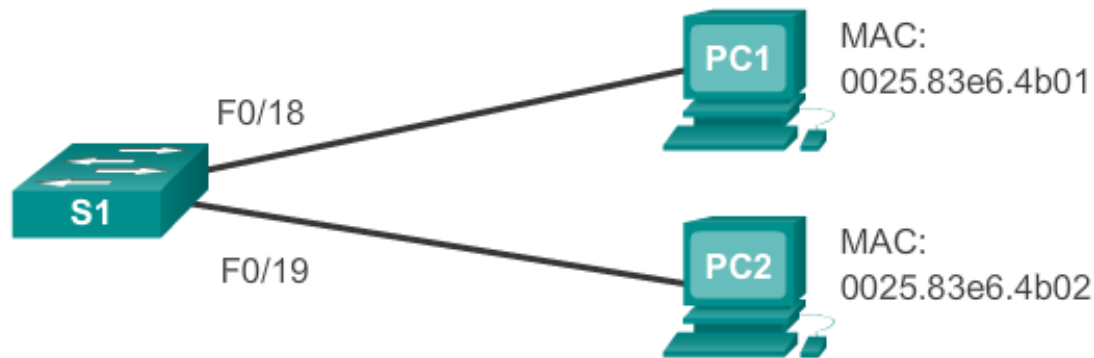
```
S1# show port-security interface fastethernet 0/19
Port Security : Enabled
Port Status : Secure-up
Violation Mode : Shutdown
Aging Time : 0 mins
Aging Type : Absolute
SecureStatic Address Aging : Disabled
Maximum MAC Addresses : 50
Total MAC Addresses : 1
Configured MAC Addresses : 0
Sticky MAC Addresses : 1
Last Source Address:Vlan : 0025.83e6.4b02:1
Security Violation Count : 0
```

VERIFYING PORT SECURITY STICK – RUNNING CONFIGURATION



```
S1# show run | begin FastEthernet 0/19
interface FastEthernet0/19
  switchport mode access
  switchport port-security maximum 50
  switchport port-security
  switchport port-security mac-address sticky
  switchport port-security mac-address sticky 0025.83e6.4b02
```

VERIFIKASI PORT SECURITY – KEAMANAN MAC ADDRESSES



```
S1# show port-security address
```

```
Secure Mac Address Table
```

Vlan	Mac Address	Type	Ports	Remaining Age (mins)
1	0025.83e6.4b01	SecureDynamic	Fa0/18	-
1	0025.83e6.4b02	SecureSticky	Fa0/19	-

```
Total Addresses in System (excluding one mac per port) : 0
```

```
Max Addresses limit in System (excluding one mac per port
```

PORTS IN ERROR DISABLED STATE

- A port security violation can put a switch in error disabled state.
- A port in error disabled is effectively shutdown.
- The switch communicates these events through console messages.

```

Sep 20 06:44:54.966: %PM-4-ERR_DISABLE: psecure-violation
error detected on Fa0/18, putting Fa0/18 in err-disable state
Sep 20 06:44:54.966: %PORT_SECURITY-2-PSECURE_VIOLATION:
Security violation occurred, caused by MAC address
000c.292b.4c75 on port FastEthernet0/18.
Sep 20 06:44:55.973: %LINEPROTO-5-PPDOWN: Line protocol on
Interface
FastEthernet0/18, changed state to down
Sep 20 06:44:56.971: %LINK-3-UPDOWN: Interface
FastEthernet0/18, changed state to down
  
```

PORTS IN ERROR DISABLED STATE (CONT.)

komen **show interface** juga mengungkapkan port switch yang salah yang disebut disabled state.

```

S1# show interface fa0/18 status
Port Name      Status          Vlan  Duplex  Speed  Type
Fa0/18        err-disabled   1     auto    auto   10/100BaseTX

S1# show port-security interface fastethernet 0/18
Port Security           : Enabled
Port Status             : Secure-shutdown
Violation Mode          : Shutdown
Aging Time              : 0 mins
Aging Type              : Absolute
SecureStatic Address Aging : Disabled
Maximum MAC Addresses   : 1
Total MAC Addresses     : 0
Configured MAC Addresses : 0
Sticky MAC Addresses    : 0
Last Source Address:Vlan : 000c.292b.4c75:1
Security Violation Count : 1
    
```

PORTS IN ERROR DISABLED STATE (CONT.)

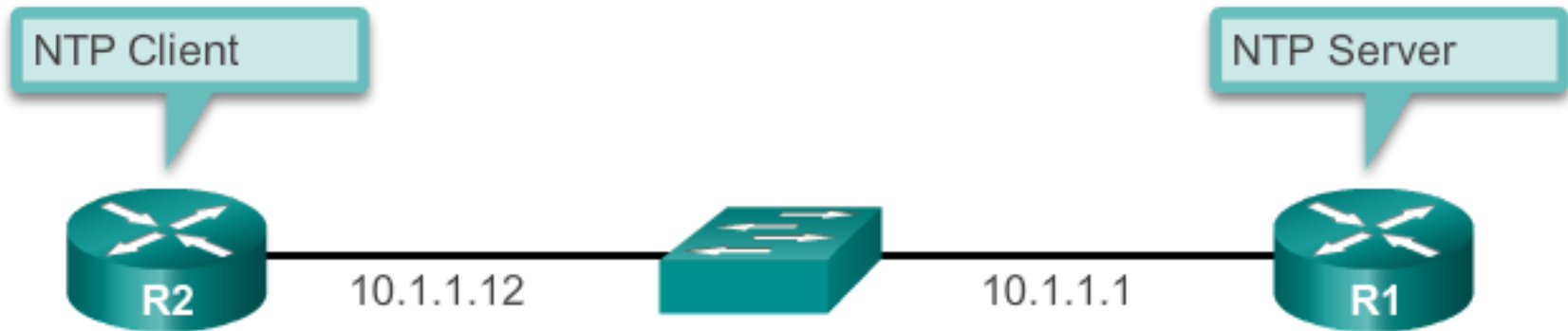
A **shutdown** or **no shutdown** interface configuration mode command must be issued to re-enable the port.

```
S1(config)# interface FastEthernet 0/18
S1(config-if)# shutdown
Sep 20 06:57:28.532: %LINK-5-CHANGED: Interface
FastEthernet0/18, changed state to administratively down
S1(config-if)# no shutdown
Sep 20 06:57:48.186: %LINK-3-UPDOWN: Interface
FastEthernet0/18, changed state to up
Sep 20 06:57:49.193: %LINEPROTO-5-UPDOWN: Line protocol on
Interface
FastEthernet0/18, changed state to up
```

NETWORK TIME PROTOCOL

- Network Time Protocol (NTP) digunakan untuk sinkronisasi jam di sistem data jaringan komputer.
- NTP mendapatkan waktu yang tepat bisa dari sumber internal maupun eksternal.
- Sumber waktu bisa dari:
 - Local master clock
 - Master clock on the Internet
 - GPS or atomic clock
- Perangkat jaringan dapat dikonfigurasi baik sebagai NTP Server maupun NTP client.

KONFIGURASI NTP



```
R2 (config) # ntp master 1
```

```
R2 (config) # ntp server 10.1.1.1
```

VERIFIKASI NTP

```
R2# show ntp associations
```

address	ref clock	st	when	poll	reach	delay	offset
*~10.1.1.1	.LOCL.	1	13	64	377	1.472	6.0716

sys.peer, # selected, + candidate, - outlyer, x falsetick

```
R2# show ntp status
```

```
Clock is synchronized, stratum 2, reference is 10.1.1.1  
nominal freq is 119.2092 Hz, actual freq is 119.2092 Hz,  
precision is 2**17reference time is D40ADC27.E644C776  
(13:18:31.899 UTC Mon Sep 24 2012)clock offset is 6.0716  
msec,  
root delay is 1.47 msecroot dispersion is 15.41 msec,  
peer dispersion is 3.62 msecloopfilter state is 'CTRL'  
(Normal Controlled Loop), drift is 0.000000091 s/ssystem poll  
interval is 64, last update was 344 sec ago.
```

CHAPTER 2: SUMMARY

In this chapter, you learned:

- Cisco LAN switch boot sequence.
- Cisco LAN switch LED modes.
- How to remotely access and manage a Cisco LAN switch through a secure connection.
- Cisco LAN switch port duplex modes.
- Cisco LAN switch port security, violation modes, and actions.
- Best practices for switched networks.

PENUTUP

Tidak ada Kata TERLAMBAT dalam hidup ini.

Lebih baik BERUSAHA daripada tidak sama sekali.

Membangun KEPERCAYAAN lebih mudah daripada mengembalikan KEPERCAYAAN itu kembali.

TERIMA KASIH



Thank you very much for your kind attention